

UCD-422

HDMI 2.1 Video Generator & Analyzer



10K Video Generator & Analyzer

UCD-422 is a video generator and analyzer for testing HDMI 2.1 interface up to 10K video modes. Resolutions supported are 4K@120Hz, 8K@60Hz and 10K@30Hz with uncompressed video. UCD-422 offers support for FEC*, DSC* Sink & Source and eARC*. HDCP 2.2* and HDCP 2.3* are also supported. UCD-422 is a flexible and robust tool either via an easy-to-use GUI for R&D debugging or via automated functional tests. UCD Console GUI provides the user access to the vital parameters and controls of the tests.

UCD Console GUI

UCD Console is Unigraf's common Graphical User Interface (GUI) for all UCD series products. UCD Console is available for Windows, Linux and macOS operating systems. UCD Console enables users to access all test features of the UCD-400. It provides users with a flexible way of navigating between its sink and source roles and functionalities of each role. Available functionalities include preview windows for captured video and audio, video and audio pattern generator, data logger for AUX and metadata content, link and DPCD register monitoring and control dialogs, EDID editor, HDCP status and control functions etc.

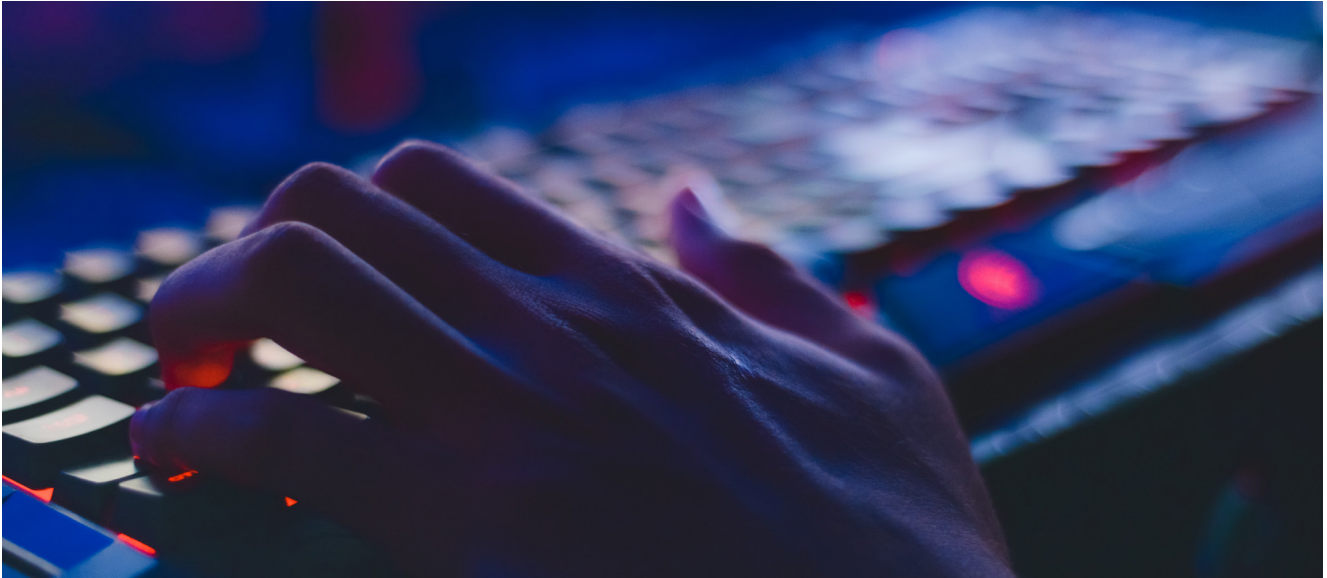
Highlights

- HDMI 2.1 Test Equipment (FRL/TMDS)
- Variable Refresh Rate (VRR)
- Auto Low Latency Mode (ALLM)
- Forward Error Correction (FEC)*
- HDCP 2.2 & HDCP 2.3 Support*
- 10K@30Hz Support
- 8K@60Hz Support
- eARC Support*
- DSC Support*

Video Analyzer Software*

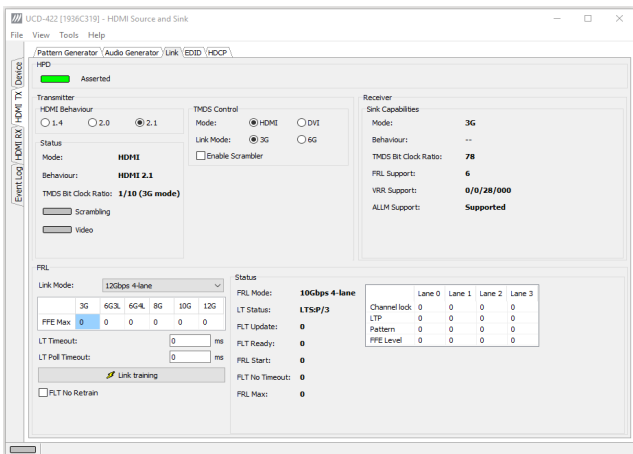
*) Please contact Unigraf for detailed availability

UCD-422 HDMI 2.1 Video Analyzer & Generator



Enhanced Gaming Features

Check the availability of enhanced gaming features on sink and source devices that support Variable Refresh Rate (VRR) and Auto Low Latency Mode (ALLM). By supporting these enhanced gaming features, the UCD-422 makes for a complete test tool for game console and display manufacturers.



Fixed Rate Link (FRL)

Fixed Rate Link (FRL) is the new video transport method in HDMI 2.1. The UCD-422 can identify interoperability issues on FRL capable source and sink devices. Users can verify if an image is captured correctly on the UCD Console when testing source devices using different FRL modes.

Specifications

Input	HDMI 2.1 (10K@30Hz) (HDMI Rx)
Output	HDMI 2.1 (10K@30Hz) (HDMI Tx)
HDMI 2.1 Features	FRL, TMDS*, ALLM, VRR
Content Protection	HDCP 2.2*, HDCP 2.3*
Additional features	eARC*, DSC*, FEC*
Computer Interface	USB 3.0
Operating System	Windows 10, 8 and 7
Software	UCD Console GUI TSI API with interface specific Test Sets
Power Input	AC/DC Power supply 100 to 240 Vac 50/60 Hz input, +12 Vdc output
Module Size	272 x 170 x 60 mm
Weight	1.2 kg w/o power supply

*) Please contact Unigraf for detailed availability

