

DPR-120

DisplayPort™ 1.2 Compliant Reference Sink



Full DP Reference Sink Functionality

DPR-120 is a full featured DisplayPort™ 1.2 compliant Reference Sink. It provides all features needed for testing DisplayPort™ Multistream (MST) source devices like PC display cards or portable computers. The Debug and Test Controller GUI is the user interface of DPR-120. It enables monitoring the performance of the DUT.

Monitor All MST Streams

The DPR-120 allows the user to evaluate the details of both the upstream DP Link and also any MST Stream received. Main Stream Attributes (MSA), Video Status and CRC of color components can be monitored and logged. The user can additionally monitor, parse and edit both the EDID and the DPCD data of the DPR-120 Sink. All these features are valuable for testing the DUT source with various sink capability scenarios.

Certified Test Tool

Debug and Test Controller GUI is also the user interface for DP 1.2 Link Layer CTS Extensions tests.

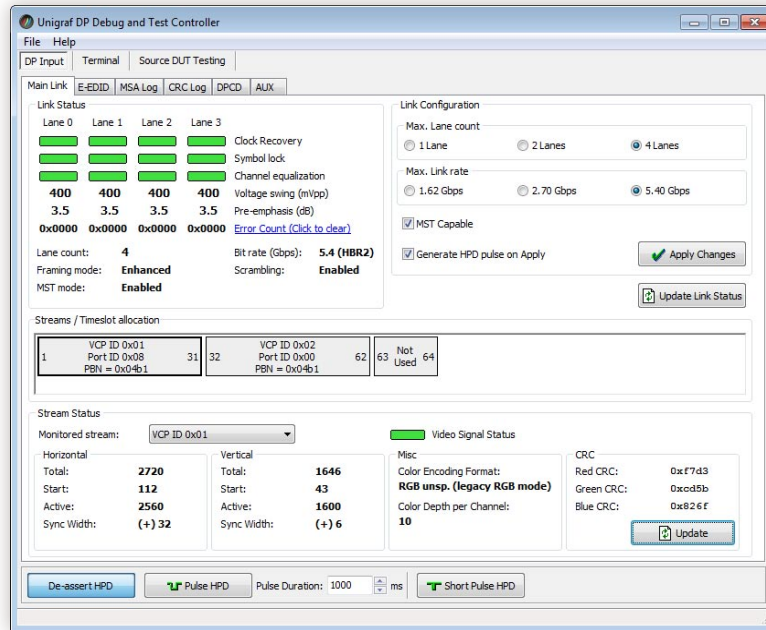
VESA has certified Unigraf DPR-120 Reference Sink as the Authorized Test Tool for testing Link layer CTS 1.2 Core and 1.2 Extension Set 1 revision 1.1

Features

- Compact sized DisplayPort™ 1.2 compliant Reference Sink
- HBR2 and MST capable Sink and Branch device
- Certified as the platform for DP 1.2 LL CTS Ext1 tests
- Optional MST Debug panel and AUX Channel Monitor
- Debug and Test Controller GUI enables monitoring and previewing any MST stream
- User programmable EDID and DPCD

DPR-120

DisplayPort™ 1.2 Compliant Reference Sink



Debug and Test Controller GUI

DPR-120 is connected to a PC through its USB. The Debug and Test Controller GUI allows the user to:

- Monitor Upstream Link status
- Select any received stream for preview
- Monitor and log the Video Status and Main Stream Attributes (MSA) of any stream received
- Monitor and log video CRC and link error count
- Monitor and edit DPR-120 EDID and DPCD information
- Vary DPR-120 capabilities like lane count and max rate
- Issue HPD with varying duration
- Report HDCP authentication status

AUX Channel Monitor

By enabling the optional feature the user can analyze MST stream allocation and AUX Channel communication in the upstream link

Link CTS Software

The optional DisplayPort™ RefSink CTS tool software enables a set of DP 1.2 CTS Link Layer compliance tests. Please refer to the documentation of the RefSink CTS Tool for details about the supported tests.

Specifications

Input	1 x DisplayPort™ HBR2 and MST compliant Rx, ST Microelectronics STDP9320 controller
Outputs	1 x DP 1.2 multistream Tx 1 x DP 1.1 compliant preview monitor S/PDIF coaxial audio monitor TRS headset audio monitor
Resolutions	4096 x 2160 input & pass through 2560 x 1600 preview
Audio	Up to 2 LPCM channels at 192 kHz, 24-bits or multi-channel compressed (AC3, DTS, etc) compliant with IEC60958 / IEC61937
Control	USB 2.0 interface
Software	Debug and Test Controller GUI DP RefSink CTS LL Extensions (option)
Power supply	AC/DC converter included
Mechanical Size	230 x 168 x 56 mm
Weight	0.9 kg w/o power supply

Specifications subject to change



www.unigraf.fi



UNIGRAF OY Piispantilankuja 4, FI-02240 Espoo, Finland
Tel +358 9 859 550; info@unigraf.fi

Please visit our web page for listing of Unigraf Worldwide Distribution